



# CablEquity™ automates Hardware Electrical Systems design

TurboTools™ Corporation  
e-mail: info@turbotools.com  
ph: 415.759.5599

Volume 2, Issue 8  
2004 © Copyright

## The revolution is here! Be a part of it. Patent Pending Technology

Hardware Electrical Systems (HES™) are an interrelation of electromechanical assemblies, sensors, functional mechanisms, electrical and electronic sub-systems, computers, power sources and distribution units connected together via cables and harnesses.

Cabling and interconnections, as a part of HES™, serve two primary purposes in electromechanical assemblies. First is to deliver necessary power to operate devices, and second is to carry signals from a particular transmitter to the desired receiver. As designers assemble their systems, the subject of interconnects is frequently one of the last areas to be addressed. However, interconnects is one of the areas with the most choices and problems.

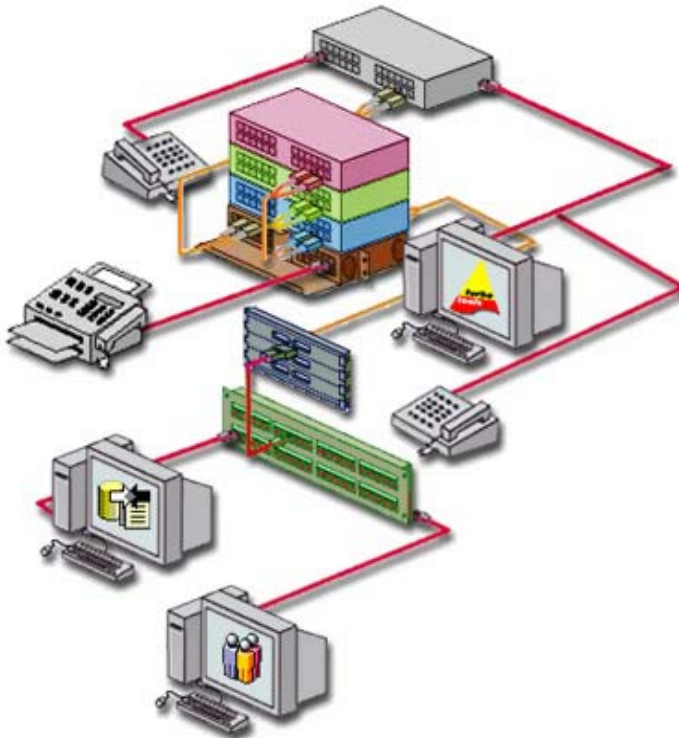
Cables can run from the simplest, low-cost constructions, to high-cost assemblies. Many multi-conductor cable assemblies are very expensive in design and labor. They may represent a significant portion of the total cost of the device that they are attached to. Poorly designed cable can be a source of electromagnetic

interference, function as a receiving antenna for noise generated somewhere in the system, can have an unacceptable level of

crosstalk, or can even be a source of unrecoverable damage to the system. Cables may also create problems due to improper physical properties.

CablEquity™ is an interactive software program focused on the automation process for Hardware Electrical Systems design from concept to manufacturing of highly integrated electronic equipment, high-tech instrumentation, any

kind of electro-mechanical or electrical systems, automotive equipment, aircrafts, ships, power plants, oil



drilling platforms, etc.

TurboTools™' interactive solution automates design, documentation, maintains data integrity, and manages all engineering and manufacturing processes during development – all in one, easy-to-use tool. In addition, CablEquity™ cuts down engineering and manufacturing costs, and improves the procurement cycle.

## Breaking News

### Unique Features:

- SMART Dynamic Translator™
- Intuitive GUI
- Automatic Revisions Control
- Track System-wide Connectivity
- DRC - Design Rule Check
- Design Reuse
- Simultaneous Multiple Designs
- APLI™
- Automatic Drawings Generation
- Automatic BOMs Generation
- Reversible Design
- SIMSA™ and SDFATM™
- Infrastructure Management
- Cost and Asset Management
- And much more...

### Significant Benefits:

- Error Free environment!
- Eliminate manual design process
- Decrease products' time-to-market
- Significantly decrease interconnects design time
- Tremendously reduce interconnects design cost
- Bring design standard across the industries
- Completely integrate with company-wide engineering, manufacturing and purchasing processes
- Cut down purchasing time of required components
- Combine different engineering skills under one software
- Improve engineer productivity and revenue per engineer
- Time-to-value capabilities